



Toms River, New Jersey

Natural Resource Restoration Project

Virtual Information Session

January 9, 2024

 **BASF**
We create chemistry

Agenda

- **Welcome** (10 min)
 - ▶ Meeting objectives – BASF and NJDEP
- **Program Overview** (5 min)
 - ▶ Toms River Restoration: A Sustainable Vision for the Future
- **Project Overview** (50 min)
 - ▶ Project by project walk in the park
- **Q&A** (20 minutes)
- **Path Forward** (5 min)
 - ▶ Schedule
 - ▶ Workshop 2

Objectives and Purpose

Educate community members and stakeholder groups about work BASF must perform to settle BASF's natural resource damage (NRD) liability at the Toms River site.

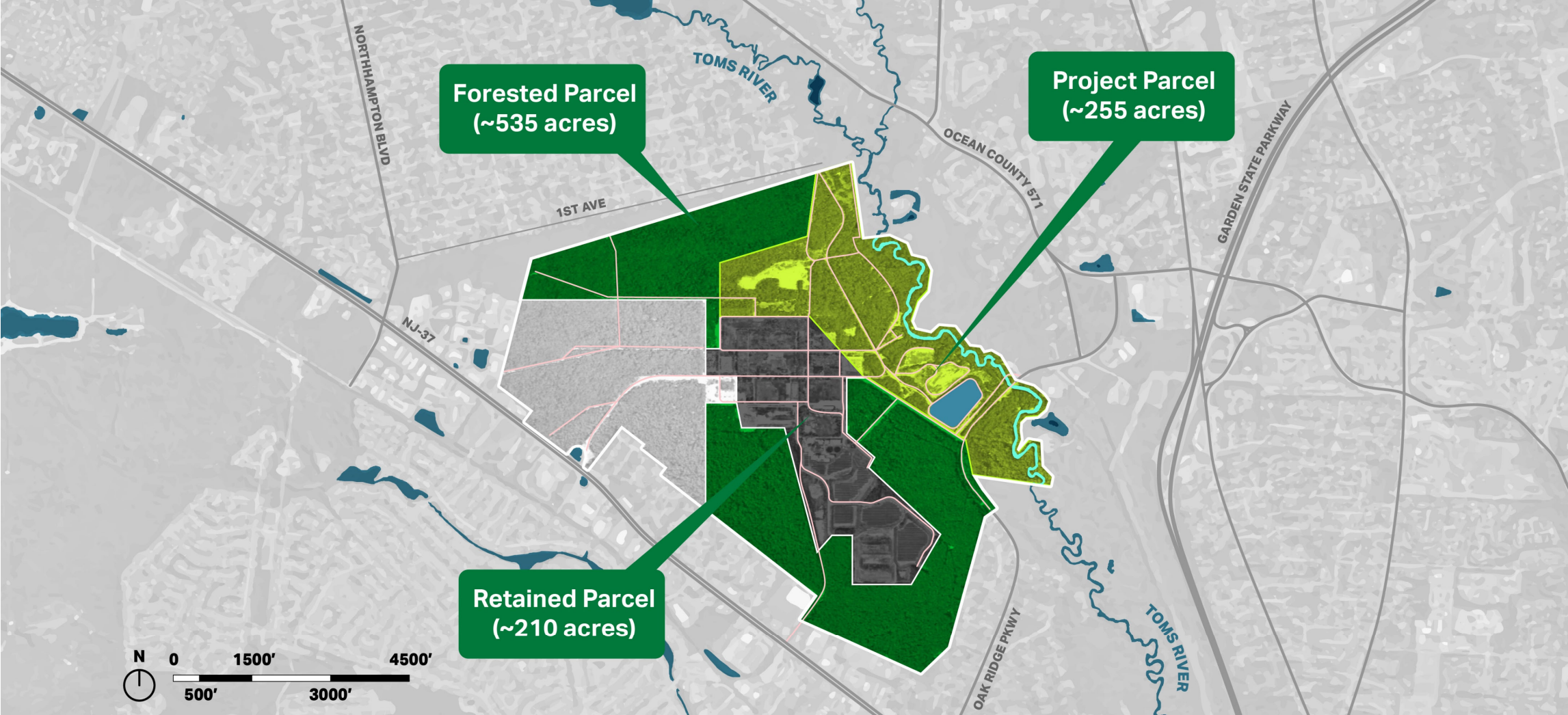
- ✓ BASF has an obligation to mitigate damages done to the **natural resources** by historic activities.
- ✓ BASF has reached an agreement with NJDEP to settle those liabilities.

Share our vision for the proposed NRD projects, currently at the conceptual design stage.

Acknowledge our **common goal** of ensuring the park will be safe and beneficial to the Toms River community.

Please provide your **input, comments and suggestions**.

Toms River Site



Scale Comparisons



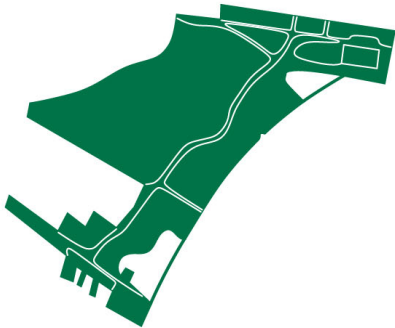
TOMS RIVER SITE
1,000 acres



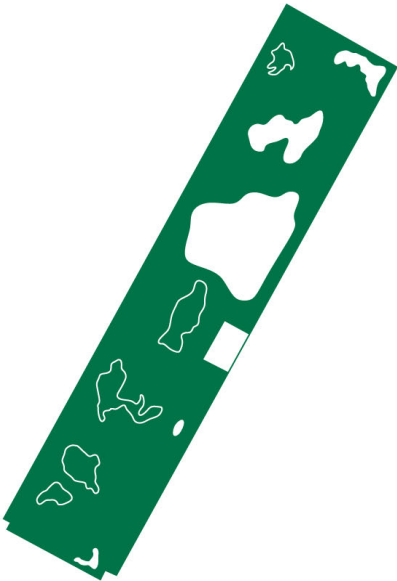
FOOTBALL FIELD
1.3 acres



METLIFE STADIUM
SPORTS COMPLEX
245 acres



LIBERTY STATE PARK
500 acres



CENTRAL PARK
860 acres

Program Overview

Ecological Uplift | Community Benefit

groundwater quality

education

flood storage

sustainability

wildlife

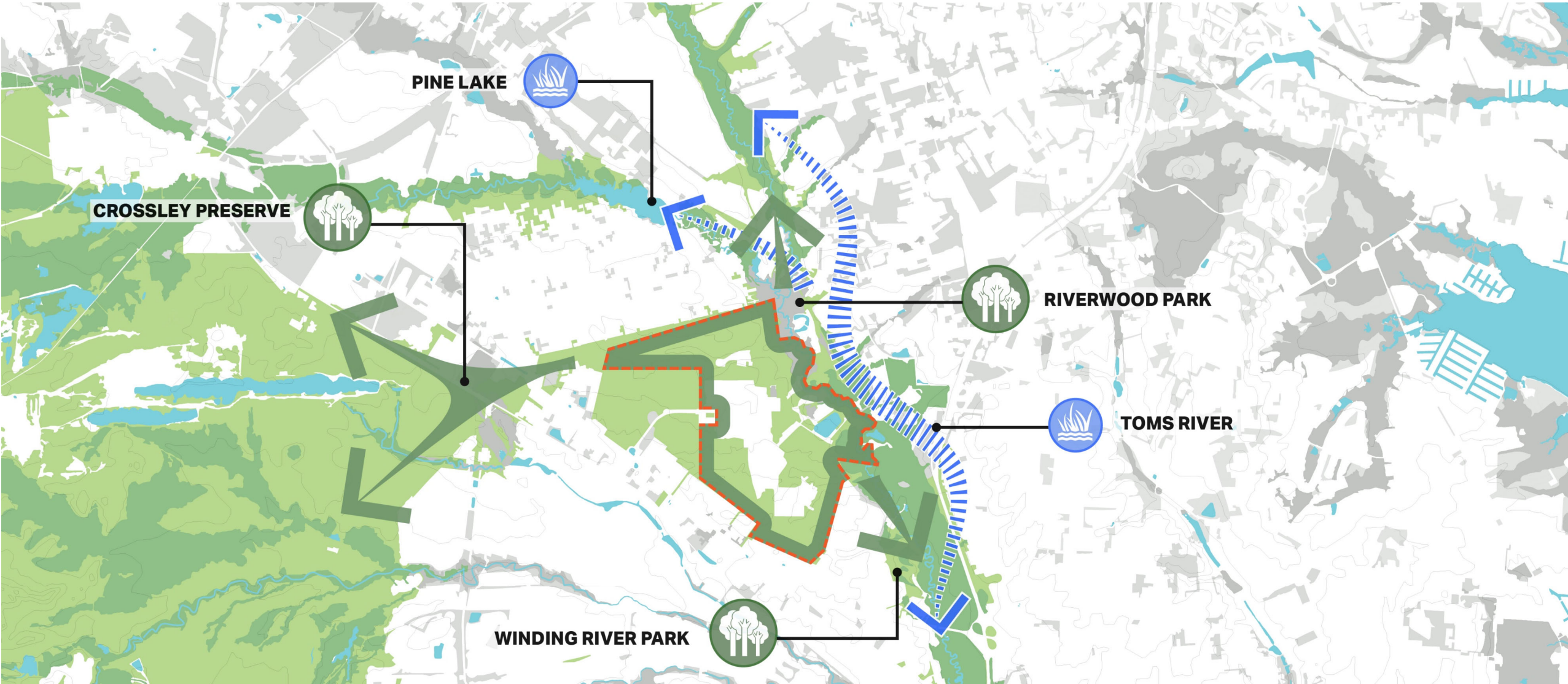
community

ecology

habitat

native species

Regional Connectivity



Ecological Restoration Opportunities

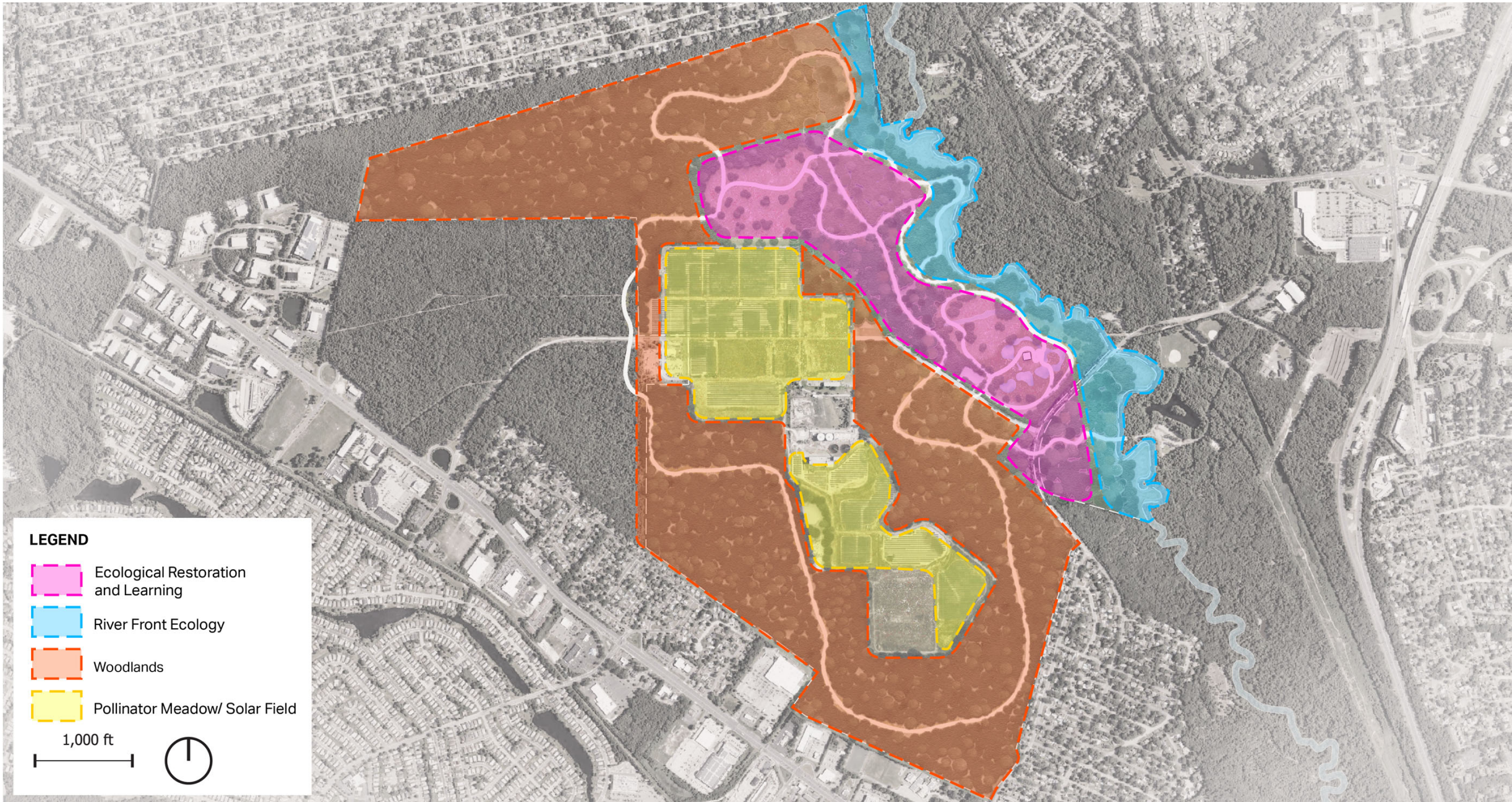




Toms River - Today

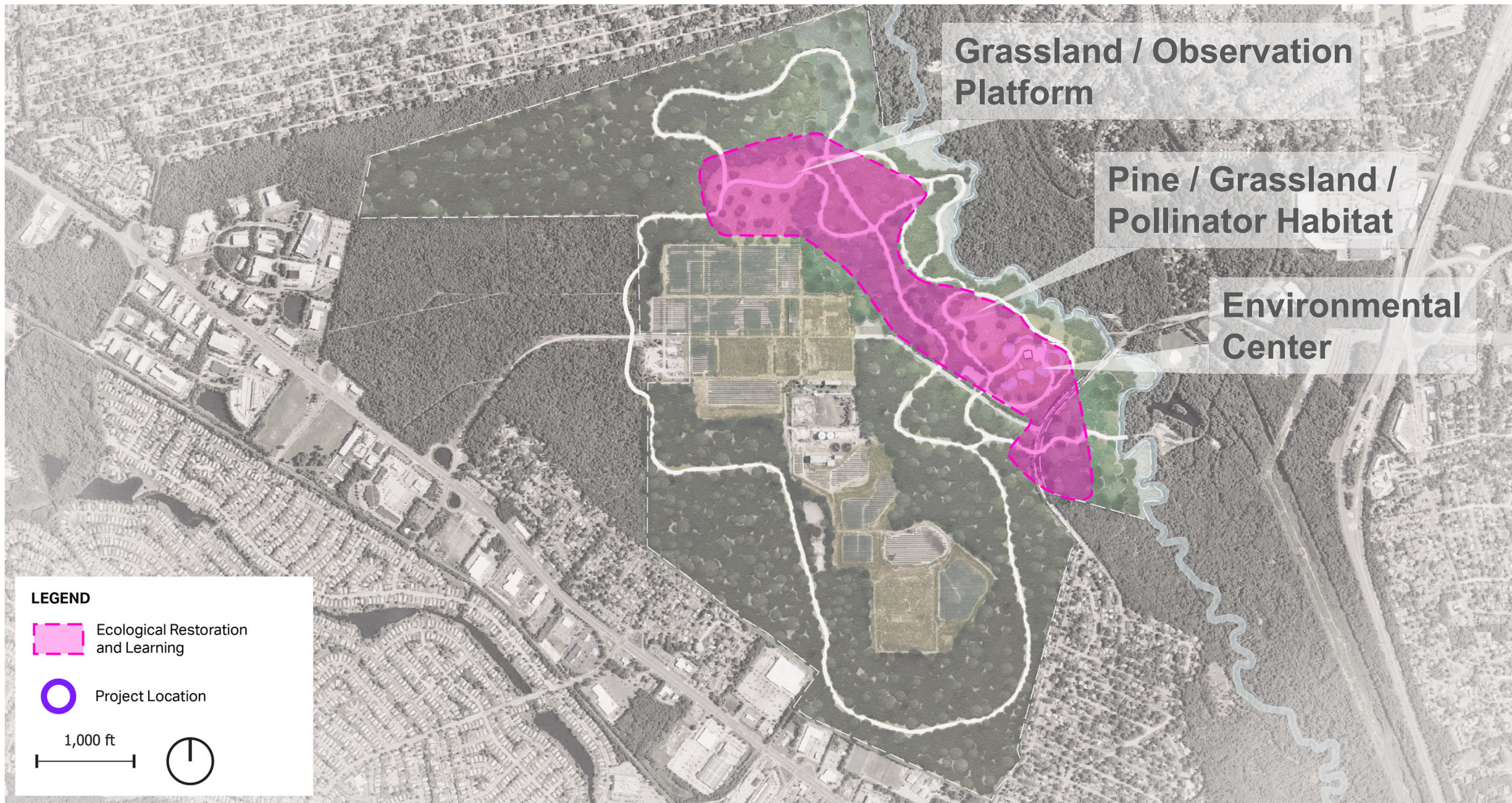


Toms River - Vision



4 Zones

Zone 1: Ecological Restoration and Learning



Zone 1: Ecological Restoration and Learning



Zone 1: Environmental Center



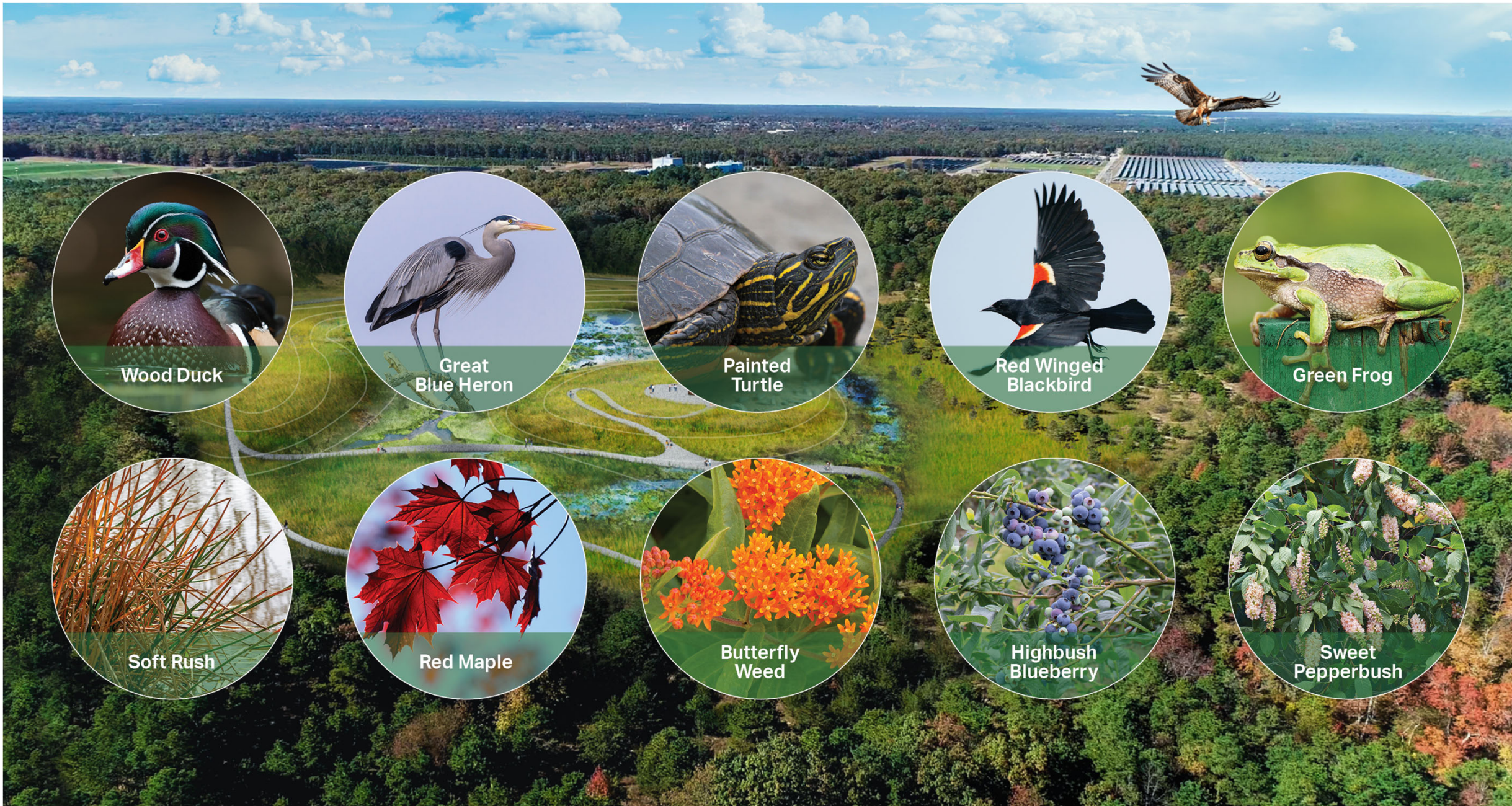
Environmental Center - Existing Condition



Environmental Center - Opportunities



Environmental Center - Opportunities



Wood Duck



Great Blue Heron



Painted Turtle



Red Winged Blackbird



Green Frog



Soft Rush



Red Maple



Butterfly Weed



Highbush Blueberry



Sweet Pepperbush

Environmental Center - Ecology



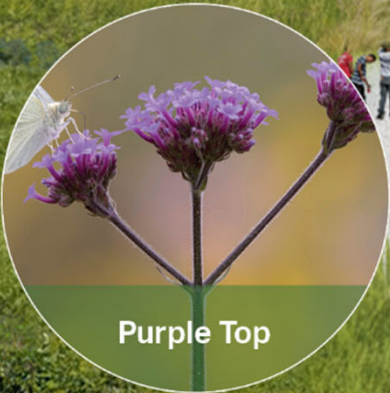
Environmental Center Arrival - Existing Condition



Environmental Center Arrival - Opportunities



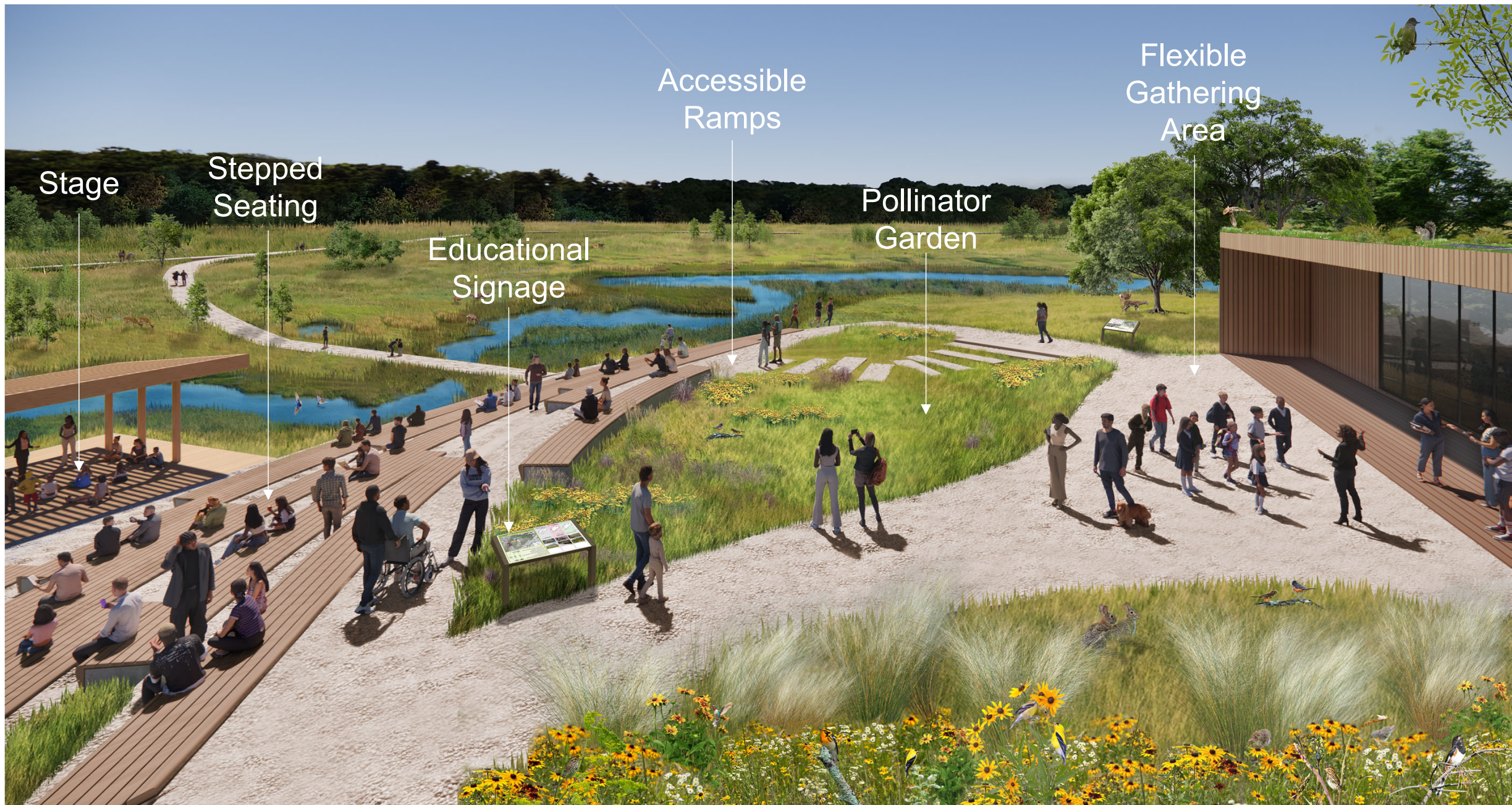
Environmental Center Arrival - Opportunities



Environmental Center Arrival - Ecology

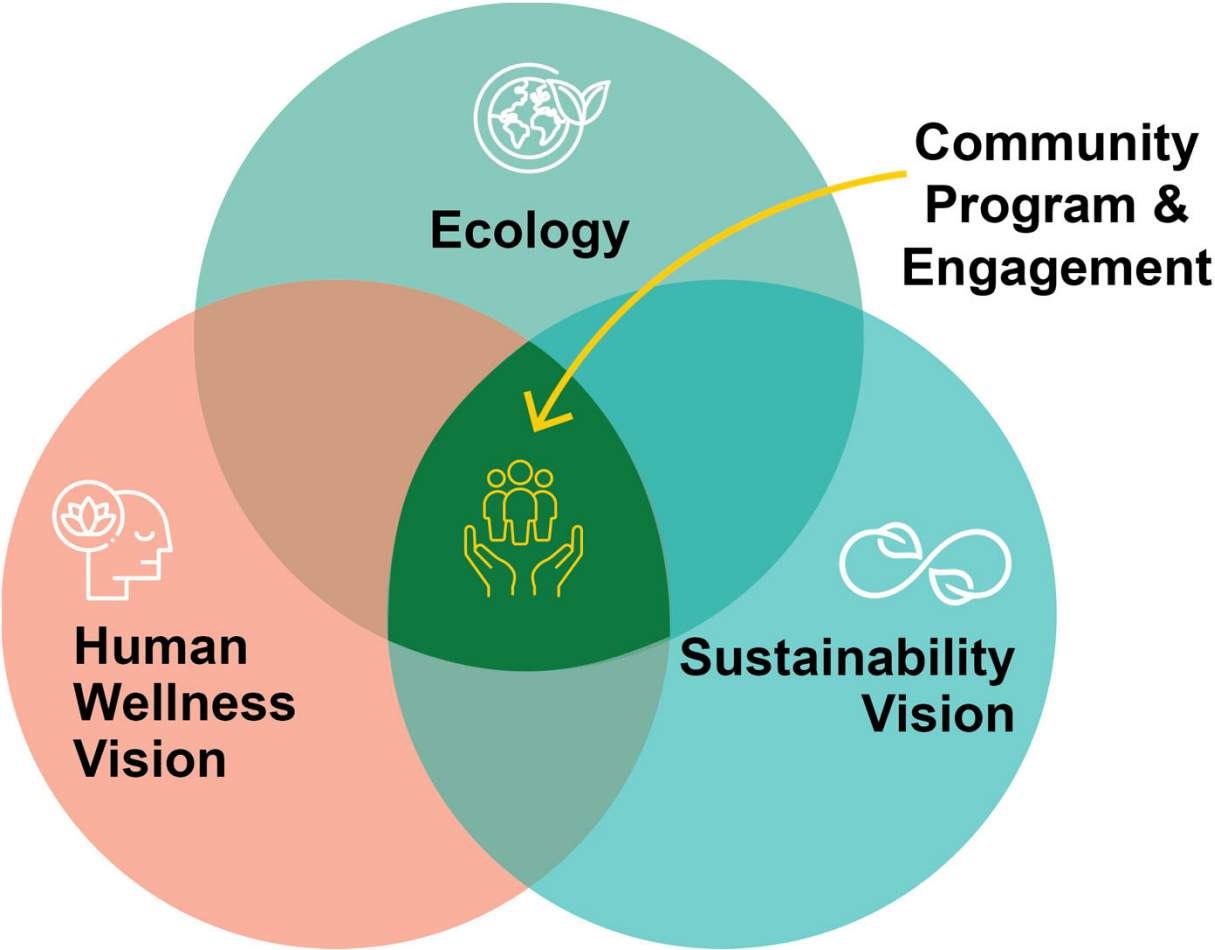


Environmental Center Amphitheater - Opportunities



Environmental Center Amphitheater - Opportunities

Environmental Education Center



Program

REGULAR USERS




STUDENTS / SCHOOLS




EDUCATORS




VOLUNTEERS AND STAFF

OCCASIONAL USERS




COMMUNITY / FAMILIES




VISITORS




RESEARCHERS & SCIENTISTS

LEARNING SPACE



EXHIBITION SPACE



OUTDOOR GATHERING



Outdoor Classroom

Outdoor Classes | Gathering Spaces | Shelter and Picnic Area



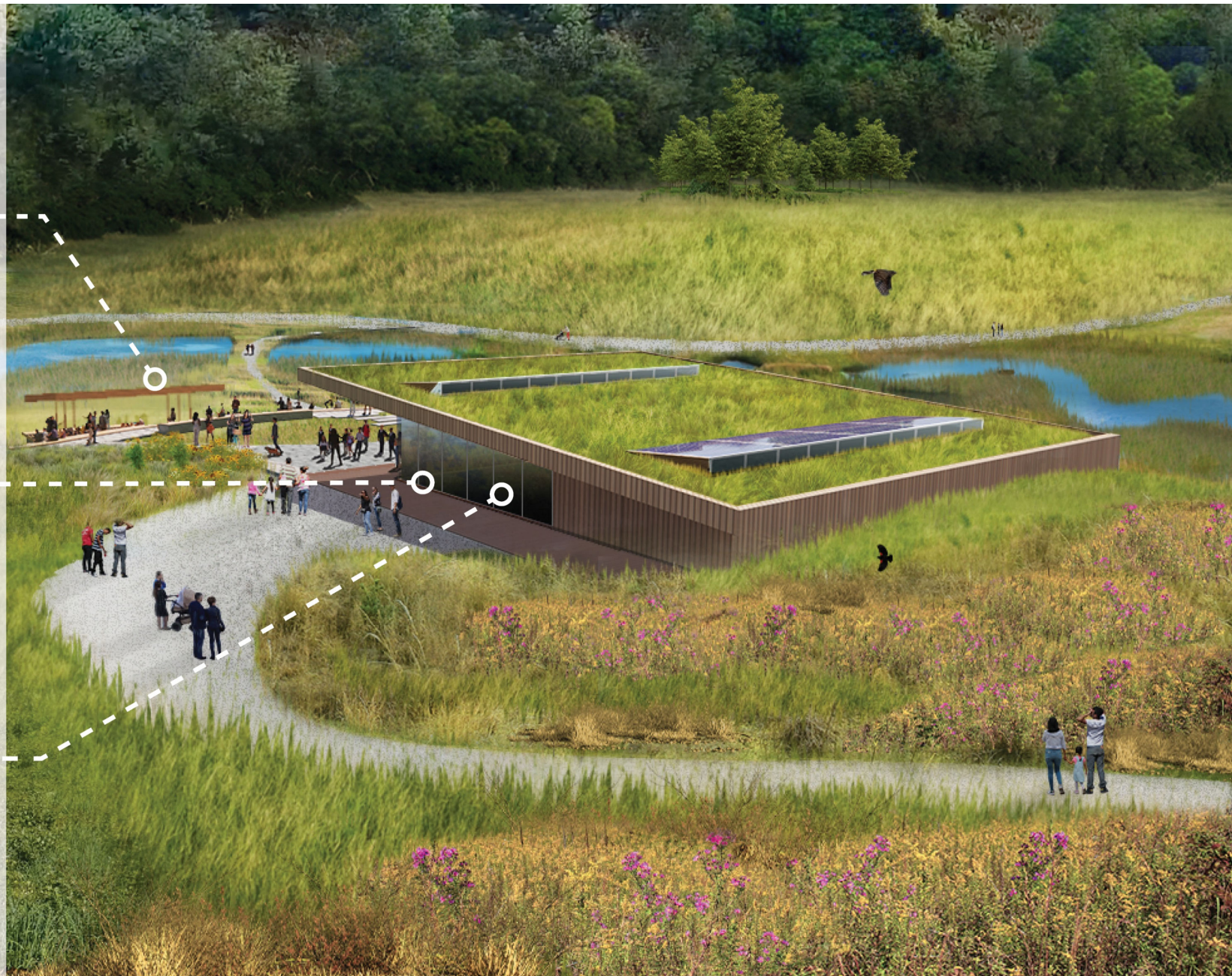
Learning Space

Playrooms | Classrooms | Libraries



Exhibition Space

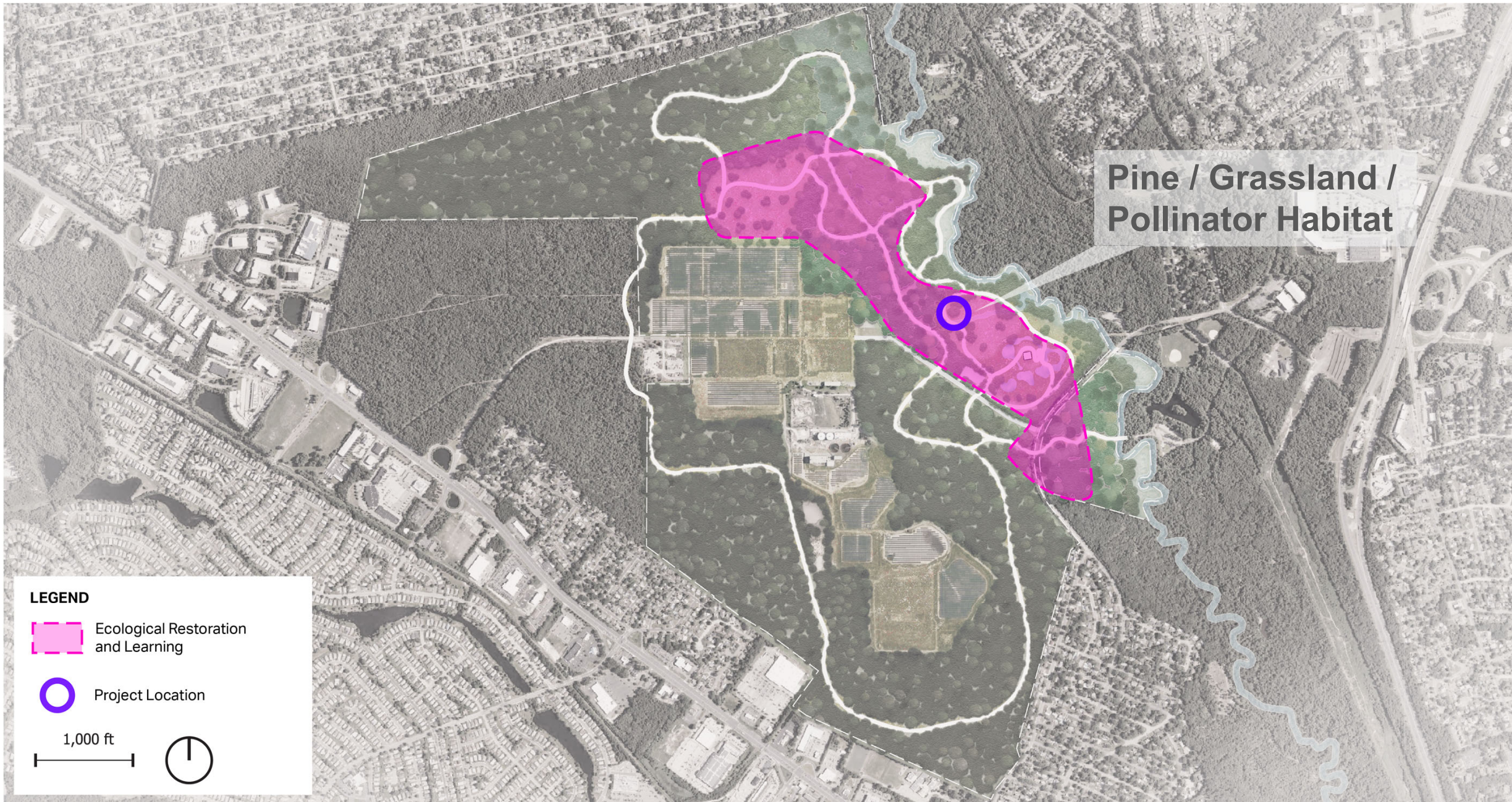
Exhibition space that showcases biodiversity, nature and sustainability



Education Center



Opportunities



Zone 1: Pine / Grassland / Pollinator Habitat





Pine / Grassland / Pollinator Habitat - Existing Condition



Pine / Grassland / Pollinator Habitat - Opportunities



Pine / Grassland / Pollinator Habitat - Opportunities





Eastern Towhee



American Kestrel



Baltimore Oriole



American Goldfinch



Monarch Butterfly



New England Aster



Sickle Leaved Golden Aster



Pitch Pine

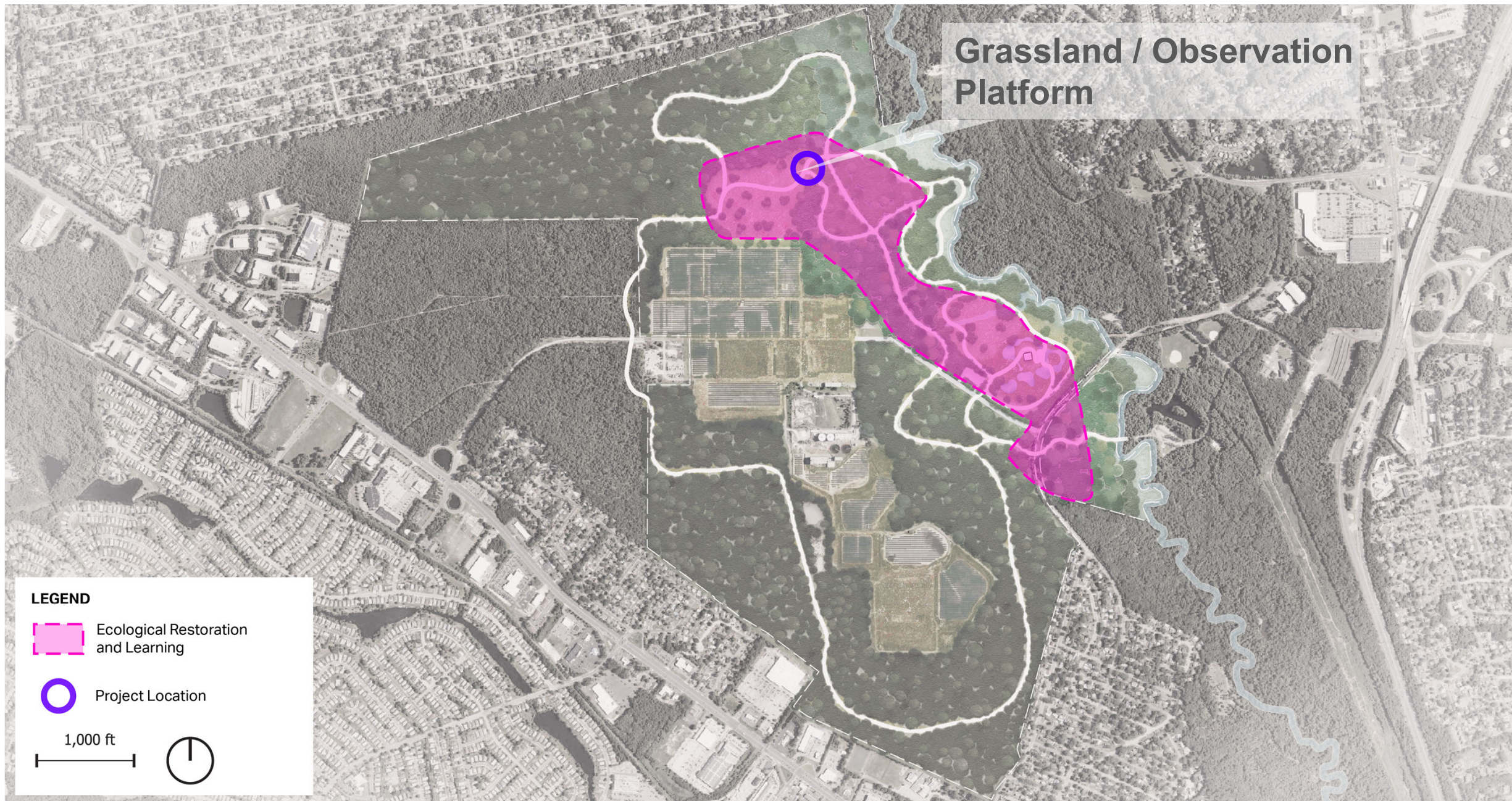


Scrub Oak



Common Milkweed

Pine / Grassland / Pollinator Habitat - Ecology



Zone 1: Grassland / Observation Platform



Grassland / Observation Platform - Existing Condition



Grassland / Observation Platform - Opportunities



Grassland / Observation Platform - Opportunities



Seating

Observation Platform

Edge Ecotones

Educational Signage

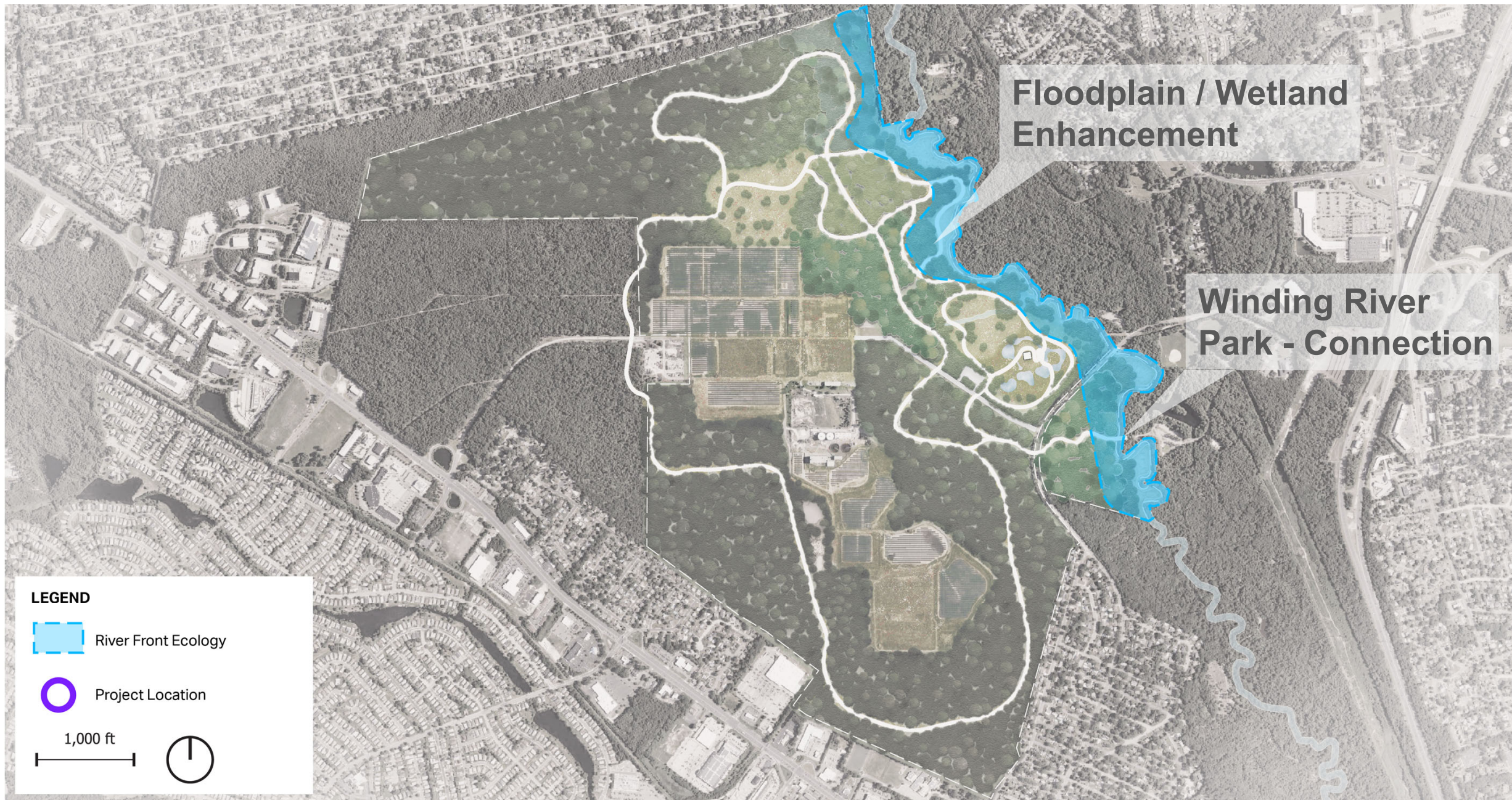
Restored Grassland Habitat

Grassland / Observation Platform - Opportunities

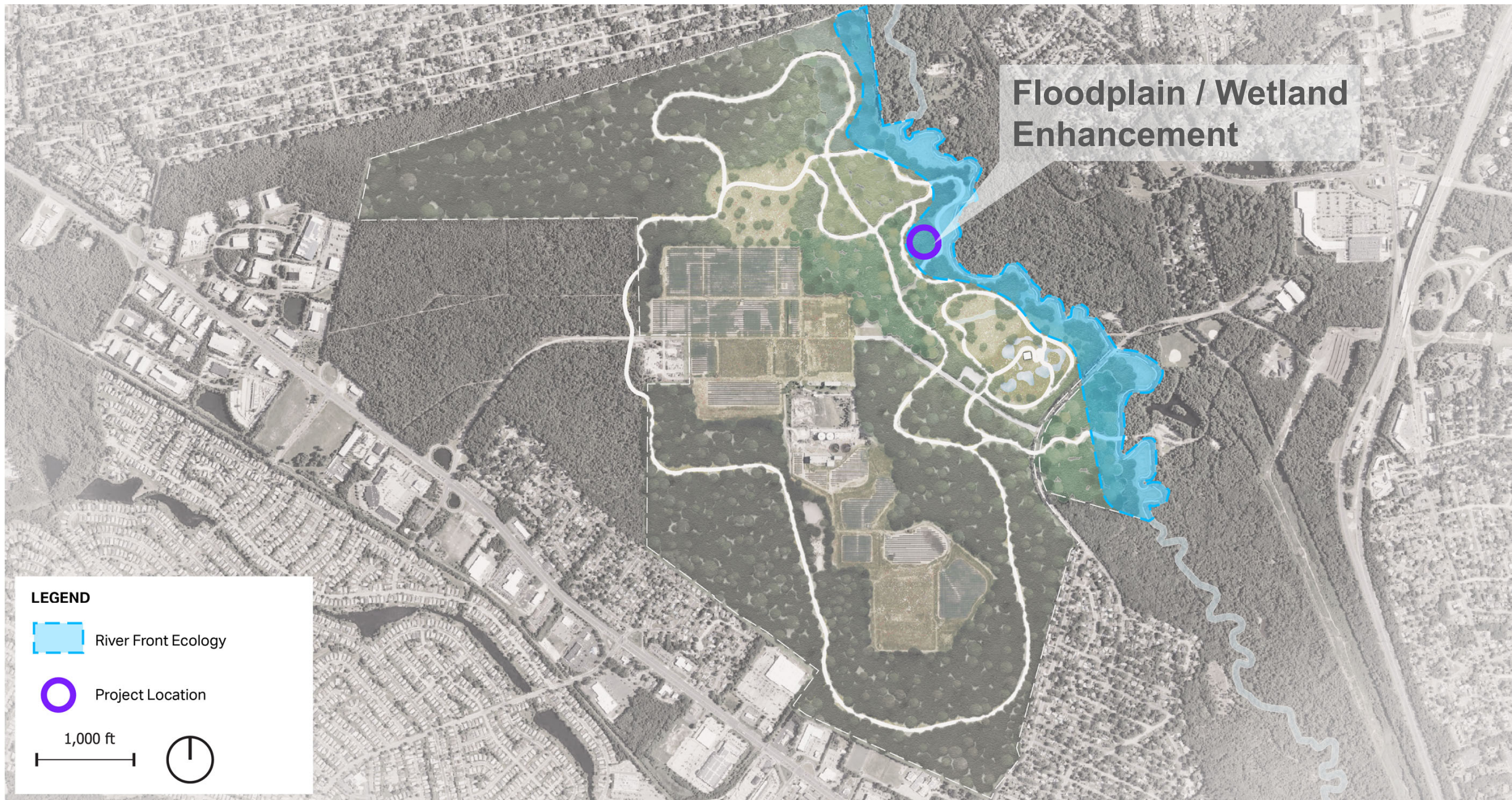


Grassland / Observation Platform - Ecology

Zone 2: River Front Ecology



Zone 2: River Front Ecology



Zone 2: Floodplain / Wetland Enhancement



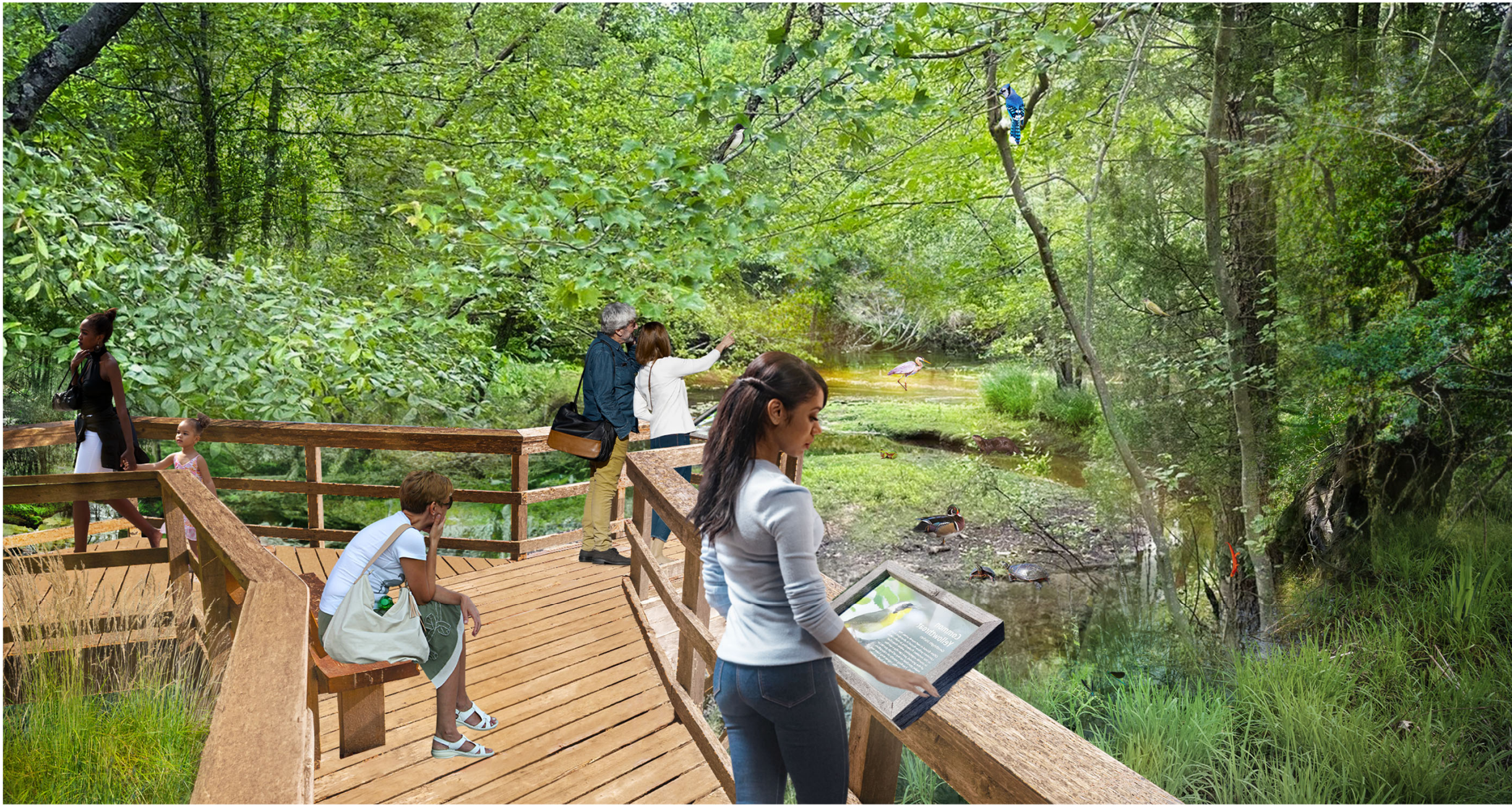
Floodplain/Wetland Enhancement - Existing Condition



Floodplain/Wetland Enhancement - Opportunities



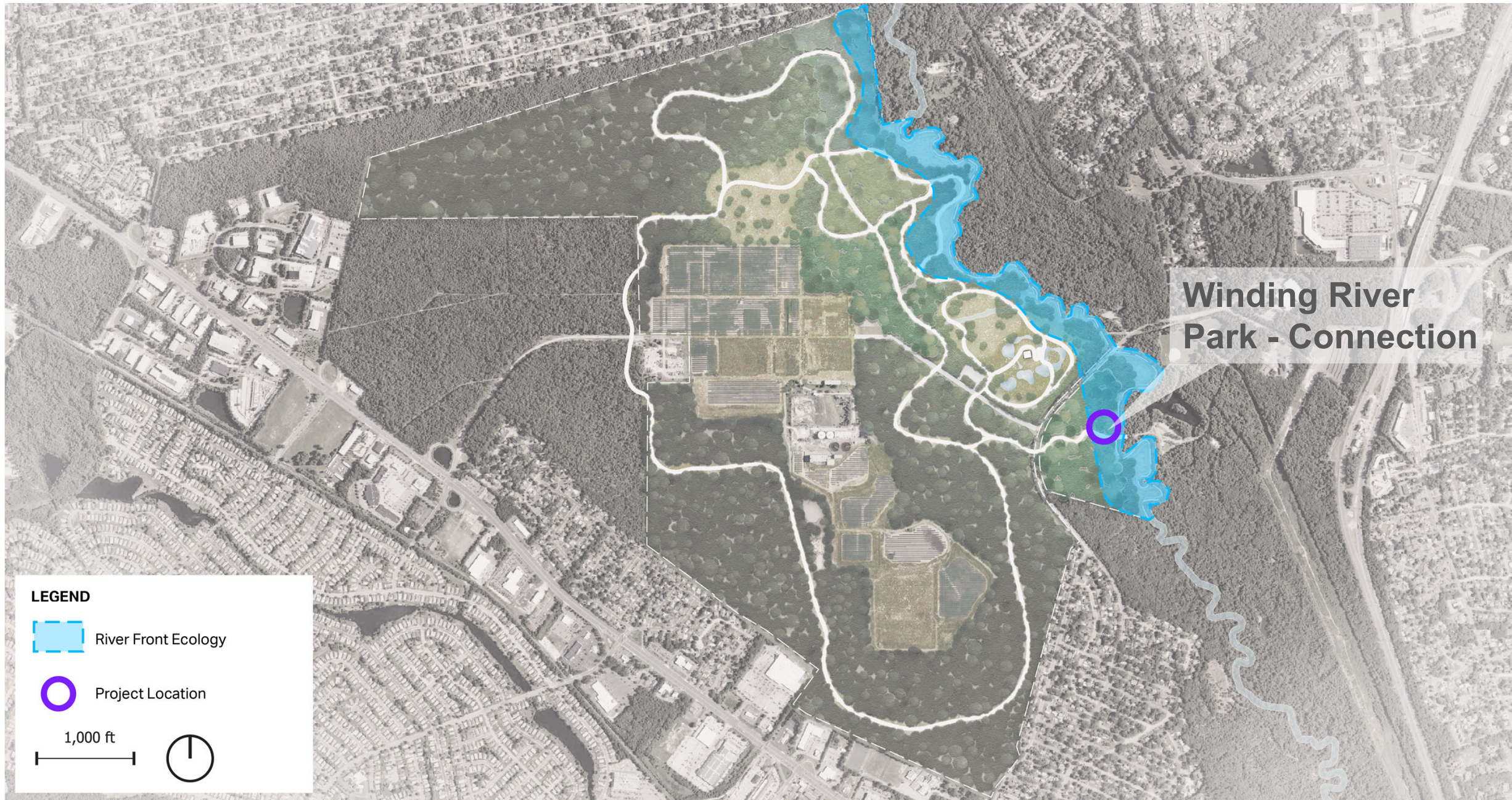
Floodplain/Wetland Enhancement - Opportunities



Floodplain/Wetland Enhancement - Opportunities



Floodplain/Wetland Enhancement - Ecology



Zone 2: Winding River Park - Connection





Winding River Park - Connection - Existing Condition



Winding River Park - Connection – Opportunities



Winding River Park - Connection - Existing Condition



Belted Kingfisher



Yellow Crowned Night Heron



Parula Warbler



American Wigeon



American Redstart



American Holly



Buttonbush



Red Maple



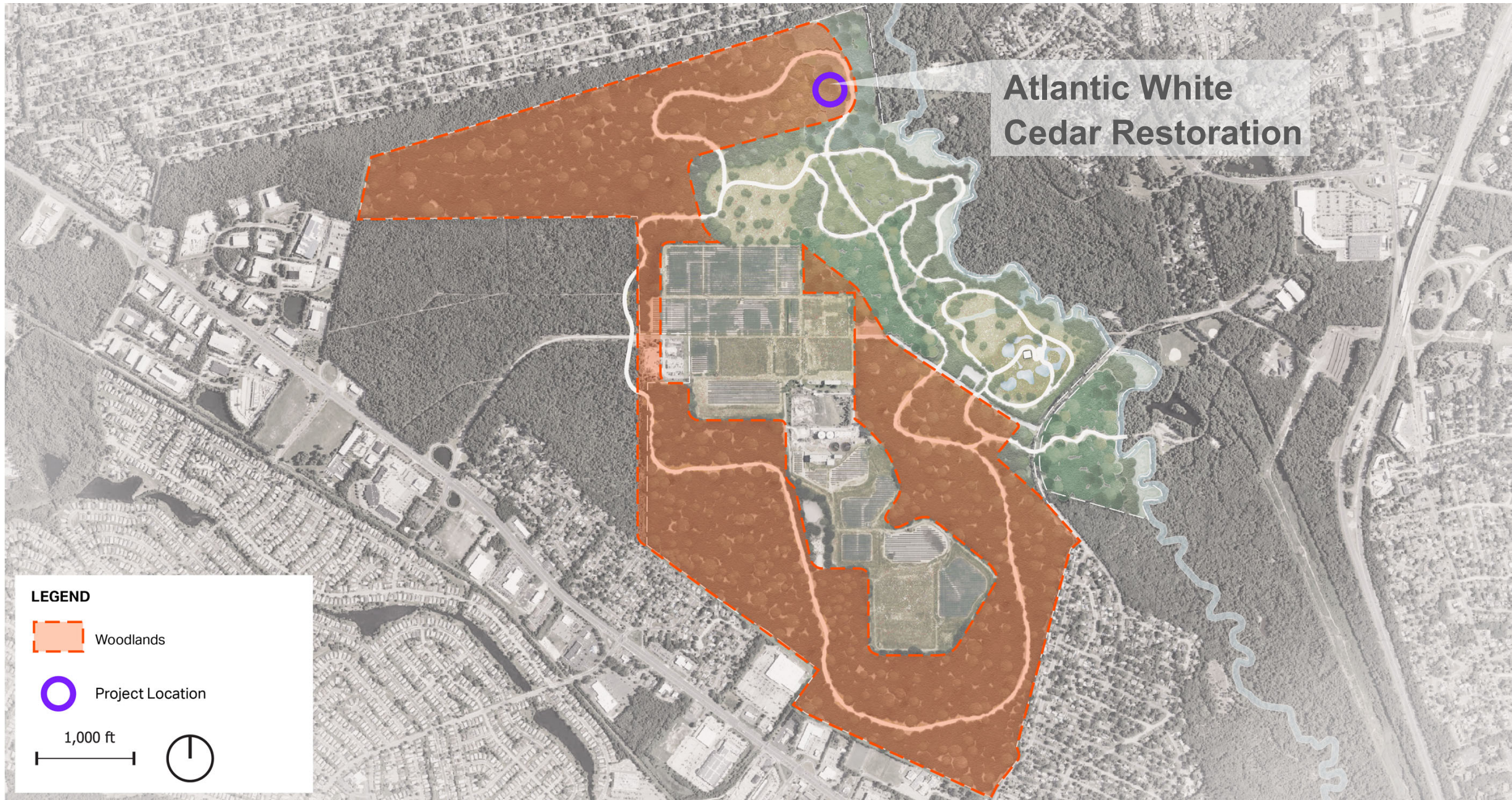
River Birch



Woolgrass

Winding River Park - Connection - Ecology

Zone 3: Woodlands



Zone 3: Forest Restoration



Atlantic White Cedar - Existing Condition



Atlantic White Cedar - Opportunities



Atlantic White Cedar - Opportunities



Yellow Warbler



Barred Owl



Black & White Warbler



Hermit Thrush



Black Throated Green Warbler



Hessel's Hairstreak



Sphagnum



Atlantic White Cedar



Sweet Pepperbush



Inkberry

Atlantic White Cedar - Ecology

Rare Species Conservation



Grasshopper Sparrow



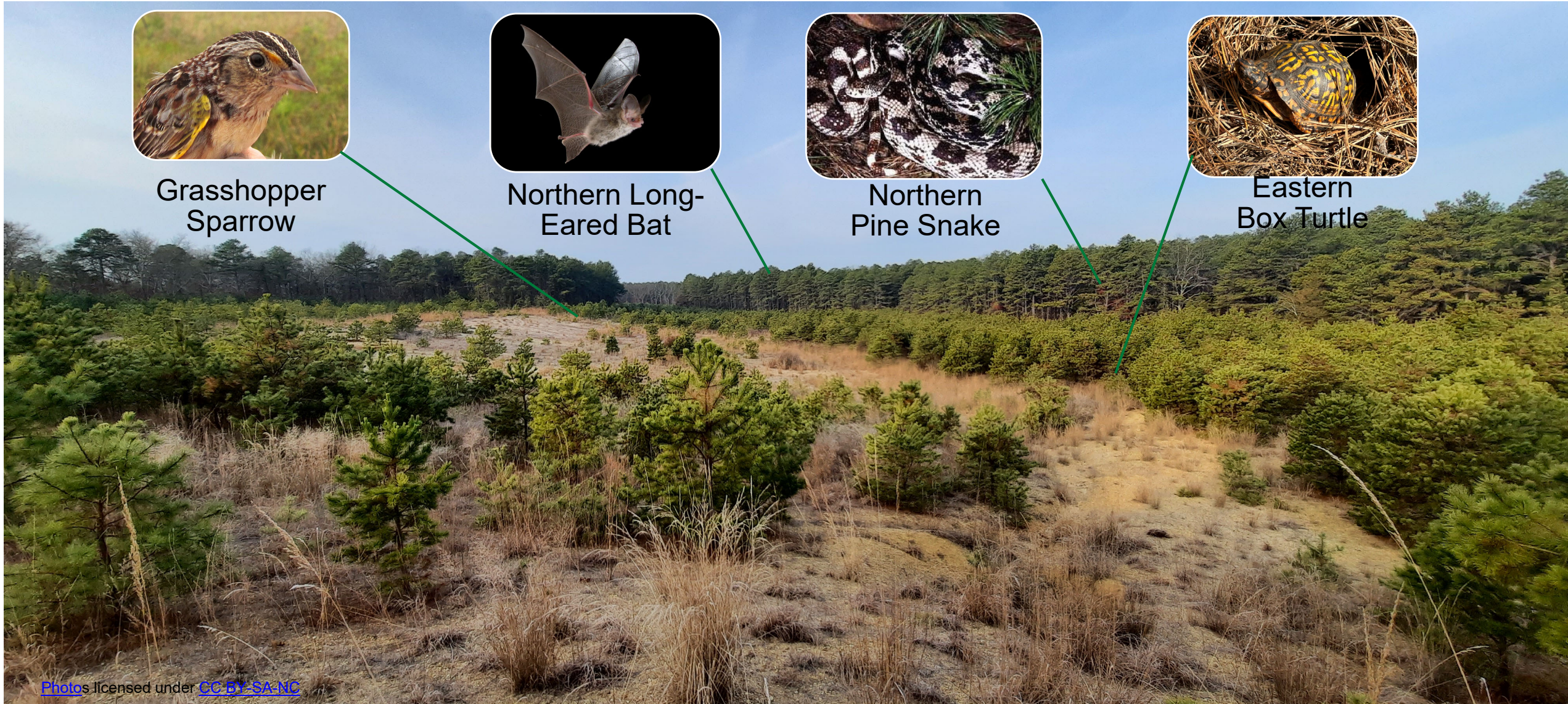
Northern Long-Eared Bat



Northern Pine Snake



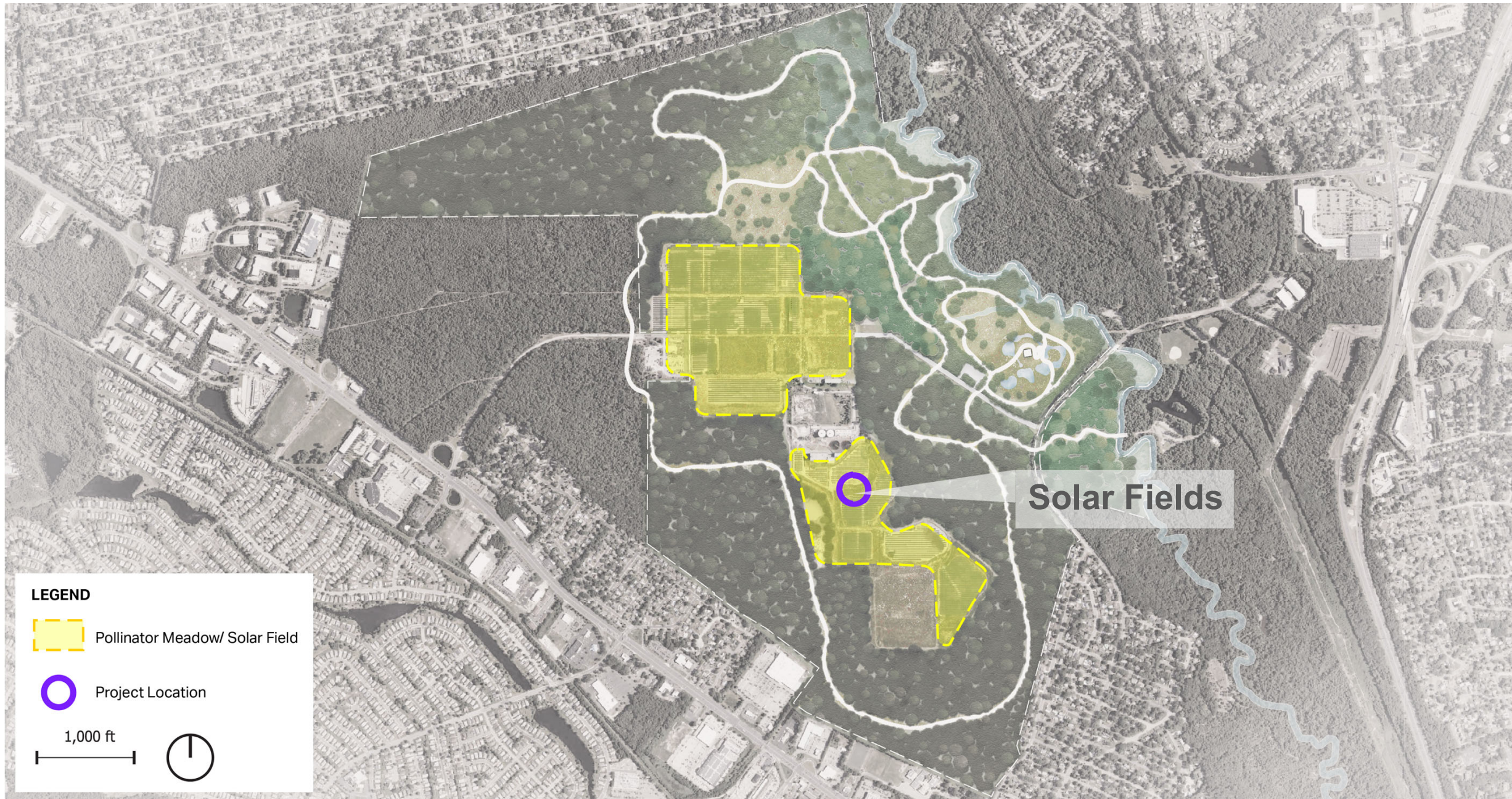
Eastern Box Turtle



Photos licensed under [CC BY-SA-NC](https://creativecommons.org/licenses/by-sa/4.0/)

Threatened and Endangered Species- Ecology

Zone 4: Pollinator Meadow



Zone 4: Uplifted Grassland / Pollinator Habitat / Solar

Opportunities

- 319 Species of Plants
- University Partnership
- Wildlife Habitat Council Certification



Project Timeline

FAST TRACK SCHEDULE	TYPICAL SCHEDULE	COMPLEX SCHEDULE
<p>Project 3: Grassland Pollinator Habitat</p>	<p>Project 2: Environmental Education Center/Grassland/Meadow (earthwork/upland plantings phase)</p>	<p>Project 2: Environmental Education Center/Grassland/Meadow (wetlands plantings/educational center)</p>
<p>Project 5: Grassland Observation Platform</p>	<p>Project 6: Northern Pine Snake, Bat, and Turtle Conservation</p>	<p>Project 1: Perched Wetland/ Pond/Wooded Buffer</p>
<p>Project 9: Uplifted Grassland/Pollinator Habitat/Solar Array</p>	<p>Project 8: Winding River Park Connection</p>	<p>Project 4: Floodplain/Wetland Enhancement</p>
<p>These projects have a straightforward and definable design/permitting process and can be relatively easy to implement.</p>	<p>These project have a more complex design process where there may be some permitting and implementation challenges.</p>	<p>These projects are sophisticated in their design process and present some permitting challenges and implementation that will require a longer and more complex timeline.</p>
<p>Estimated Time to Completion: Summer 2026</p>	<p>Estimated Time to Completion: Fall 2027</p>	<p>Estimated Time to Completion: Spring 2029</p>

We have shared our vision – now we want to hear from you!

Please text questions to 973-601-5973



Questions & Answers



IN-PERSON POSTER SESSION
Toms River North High School
Date to be confirmed....

**Public Survey and Additional
Information:**

TomsRiverNRD.com

Questions/Comments:

TomsRiverNRD@basf.com

Path Forward

 **BASF**

We create chemistry